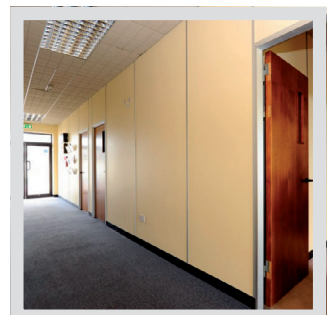
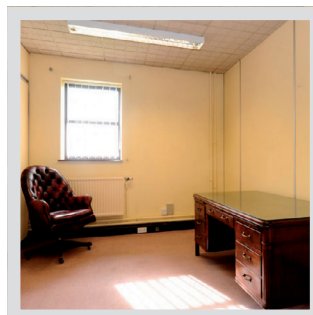
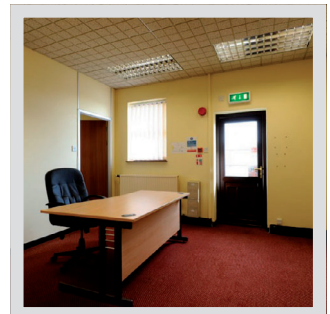
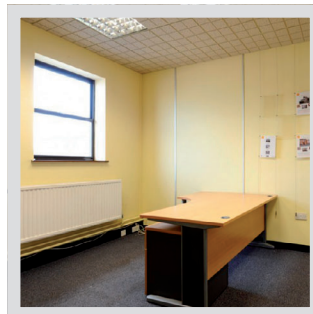


# BUILDING 597



## APPROX. 361.19 SQ M (3,888 SQ FT) RENT: UPON APPLICATION (SUBJECT TO VAT)

The former Rod & Gun Club provides excellent facilities comprising a single storey building with an external bund, two elevated trap houses and adjacent archery range.



- Detached building
- Bar and kitchen
- Male/female/disabled WCs
- Comfortable lounge

- Carpeting to remain
- Double glazing
- Central heating by radiators
- Viewing gallery to range
- Good car parking
- Rateable value £12,500



info@bentwatersparks.com

T: +44 (0)1394 460655 F: +44 (0)1394 460355 E: INFO@BENTWATERSPARKS.COM