



BENTWATERS PARKS

LIGHT INDUSTRIAL UNIT
(BUILDING 4)



**100MB
BROADBAND
HAS ARRIVED**

WWW.BENTWATERSPARKS.COM

LIGHT INDUSTRIAL UNIT (BUILDING 4)

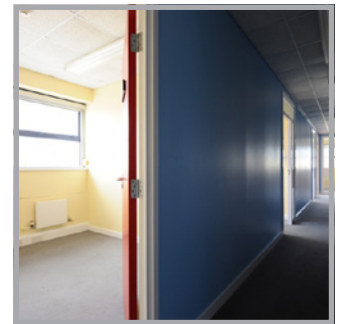


BENTWATERS PARKS

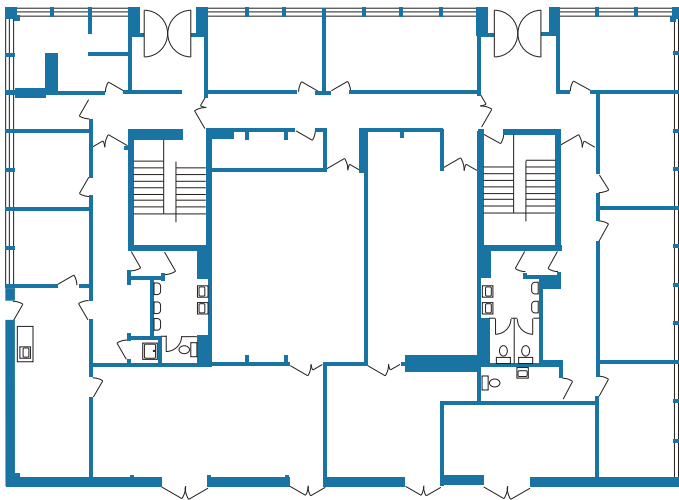
APPROX. 681.88 M²
(7,340 FT²)

OFFICE / LIGHT INDUSTRIAL

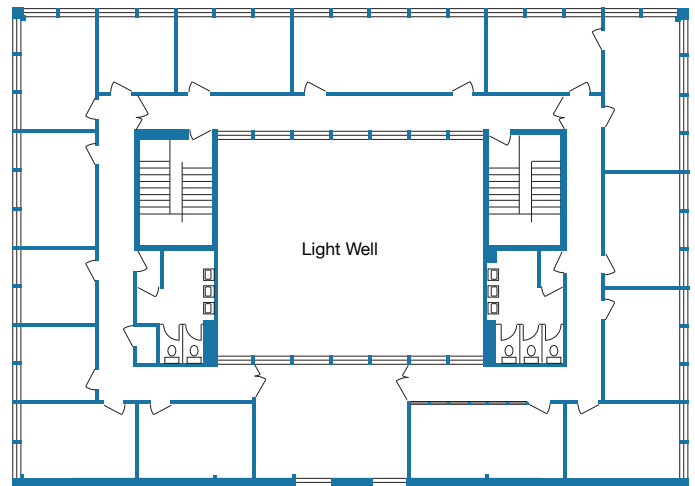
Building 4 comprises a detached 2 storey office of steel frame construction, clad externally in colour coated steel profile, under a part steel profile/part felt roof. Flexibility of use is afforded by loading doors to the rear whereby the property lends itself for part storage or light industrial if required.



FLOOR PLANS



GROUND FLOOR



FIRST FLOOR

FEATURES

- Detached building
- Extensive car parking and secure yard
- 2 x staircases
- Male/female WCs
- Carpeting to remain
- Double-glazed/perimeter trunking
- Suspended ceilings
- Central heating
- Rateable value to be assessed
- Fibre optic broadband available
- Rent: upon application (subject to VAT)